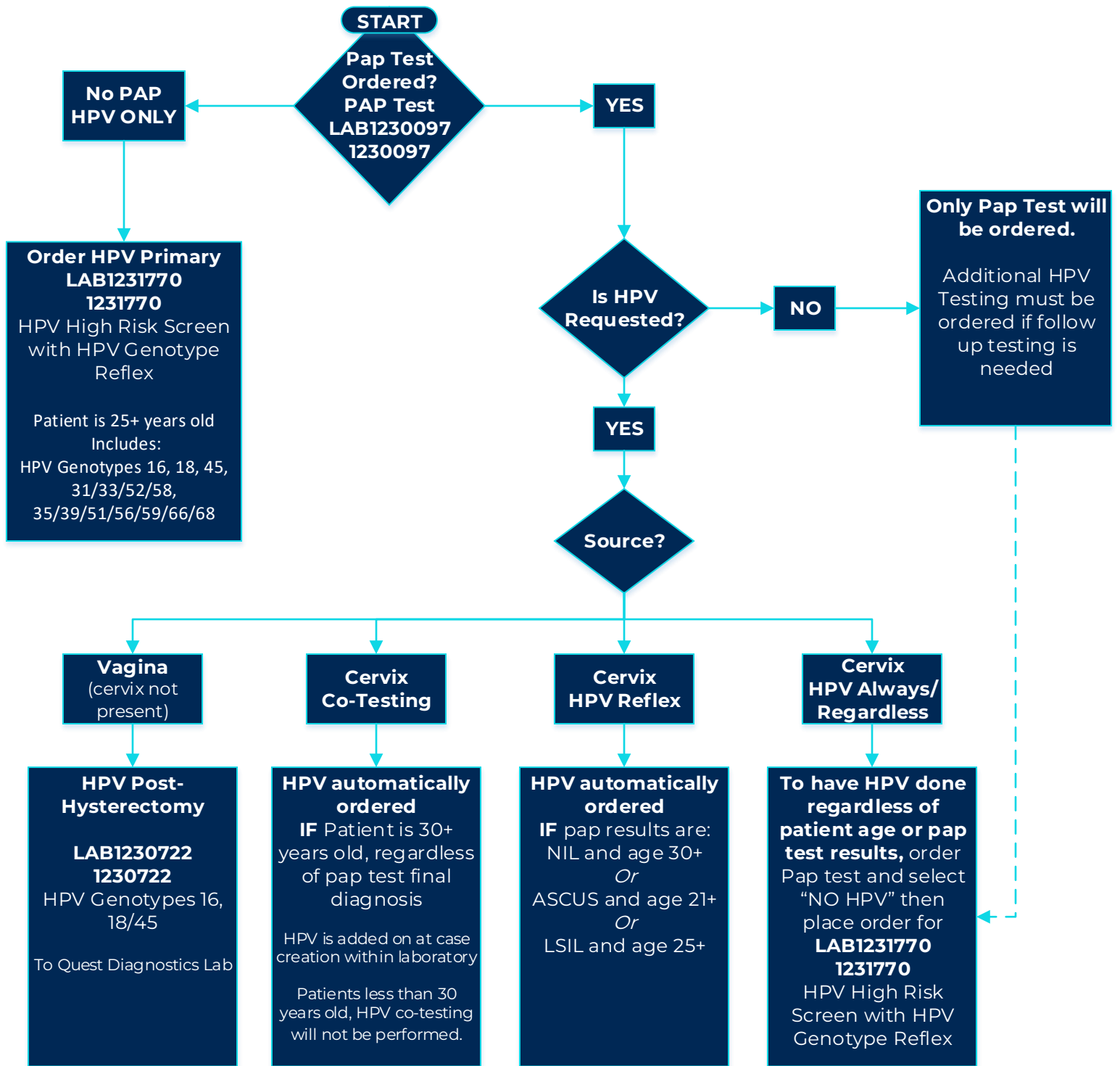


PAP and HPV Reflex/Testing Options

Corewell Health Laboratory



LAB1230097 Pap Test
 LAB1231770 HPV Screen w/HPV Genotype Reflex
 LAB1230885 Chlamydia + Gonococcus PCR
 LAB1230886 Chlamydia PCR
 LAB1230887 Gonococcus PCR
 LAB1230888 Trichomonas PCR

Aseptic Control PAP Test Lubricating Jelly (ITM-1140484) and Surgilube (ITM-1092842) are the only lubricating jellies to be used with ThinPrep

Reminders:

- ✓ Specimen Source is on the container and in the order.
- ✓ Patient Legal Name and Date of Birth are on the vial.
- ✓ Lids to containers are on correctly and tight.
- ✓ Check the lab catalog for additional collection information: corewellhealth.testcatalog.org